

AZIMUT



MAGELLANO 60



# INDEX

01	THE DESIGN & LIFESTYLE ON BOARD	P04
02	HER MAIN TECHNICAL FEATURES	P23
03	MAGELLANO 60 SPEC SHEET	P27
04	THE MAGELLANO SERIES	P32
05	ABOUT AZIMUT	P34



A one-of-a-kind beauty, enrapturing, that steals your breath away, leaving you speechless. An extraordinary idea as the only possible pathway, to get to where you want, to explore, to go beyond.

The freedom of embracing the unknown, that you know you'll love as a part of your very own story. A thought that provokes your mind and then inspires you to aim for the impossible, making mistakes, yet being brave.

A magic je ne sais quoi that enchants and intrigues you, moving you to feel more and to sense uniqueness.

The choice to risk it all, the one that makes you go for it, to impress yourself and all those who are worth it.

Welcome to Azimut.

AZIMUT.  
DARE TO AMAZE.





01

# THE DESIGN & LIFESTYLE ON BOARD

# SOPHISTICATED SEEKER OF ADVENTURE

An ode to freedom and elegance, the Magellano 60 is a crossover that gracefully expresses the explorer's spirit boosted by the navigational prowess of Dual Mode hull. Her discreet charm smoothly unfolds through ample spaces with a luminous nature, while the onboard comforts courteously deliver privileged travel that knows no boundaries. This pleasant and promising philosophy is adapted to prolonged journeys to new frontiers.

Free your inner explorer with the Magellano 60.



# A TIMELESS DESIGN





Welcome aboard, ladies and gentlemen.

Let us begin the tour.





# THE WONDER OF CRUISING



The exteriors bear the iconic signature of the Magellano Series: vertical bow, large windows, clean and elegant lines, with teak louvers as a mark of discreet and immediately architectural charm. On the Magellano 60, the clean lines evolve into more contemporary traits, with edges that define the contours of the surfaces, further enhancing the linearity of Ken Frievoch's hand.





# A FRESH-AIR FORE LOUNGE

The bulwarked bow lounge soaks its social seating with sun, tempting guests to fold down the second row of sofas and extend the sunbeds. Suspended on deep cushions, feeling nothing but sky, sea and wind, another level of relaxation is possible.







A unique sunbed sofa arrangement, styled like freestanding furniture, provides exceptional comfort under full sun, with a privileged view.





# A VISUALLY IMMERSIVE EXPERIENCE

The cockpit, conceived as a natural extension of the large lounge on the main deck, becomes an Infinity Terrace overlooking the water, offering uncompromising views without barriers thanks to a transparent glass parapet. Magellano 60 answers to the desire for closer contact with nature, for yachtsmen who love long stays on board and taking to sea in search of new frontiers and landscapes.



# CONCEIVED FOR ALL FRESCO LIVING





BREATHTAKING  
OPEN-AIR  
BEAUTY

# CHARMING COMFORT

The internal dining area sits before a floor-to-ceiling window, which offers breathtaking views of the waves. The table, with its practical square shape, can be raised and extended if necessary, allowing six guests to lunch comfortably in the presence of the sea.







A convertible dinette is placed next to the full-height window, offering a privileged, intimate view of the sea. It's easy to imagine yourself here at breakfast, reading a book or having a conversation in the evening.

The interiors of the Magellano 60 express the intentions of the experience – an uninterrupted view of the horizon and a constant dialogue between indoor and outdoor environments – with bright spaces. A half-step separates the galley from the living area. The large windows and the fully opening cockpit doors create a continuity with the marine environment, bringing the pleasures of life at sea on board, into the curated main salon.





# LET IN THE LIGHT

Natural light is the undisputed protagonist that flows in from the large deckhouse windows. The concept of the living area does not look for accents but envelops generous atmospheres with calm and nature.

The “crossed” DNA of Magellano 60 is not only expressed in the aesthetics, but above all in its aptitude for travel: the Dual Mode hull is also hybridized for comfortable navigation at low speeds, as well as sustained cruising, absorbing the impact of the waves and offering the freedom to cruise in a wider range of sea conditions.





Now, let us discover the guest accommodations.

Shall we?



# SUSPENDED IN TIME

The warm and welcoming full-beam Owner's Suite captures the contemporary and suspends it in time, the perfect sanctum for longer stays at sea. Chosen with care and attention to detail, the distinctive palette of materials ranges from a Viennese straw, adorning the furniture, to the softly textured fabric behind the headboard.





# DESIGNED TO WELCOME

The choice of colors, soft and ton sur ton, complete a perfect picture: the only essence, brushed Cinder oak with warm gray hues, goes well with light lacquers in shades of ivory and white, highlighted by bronze details.

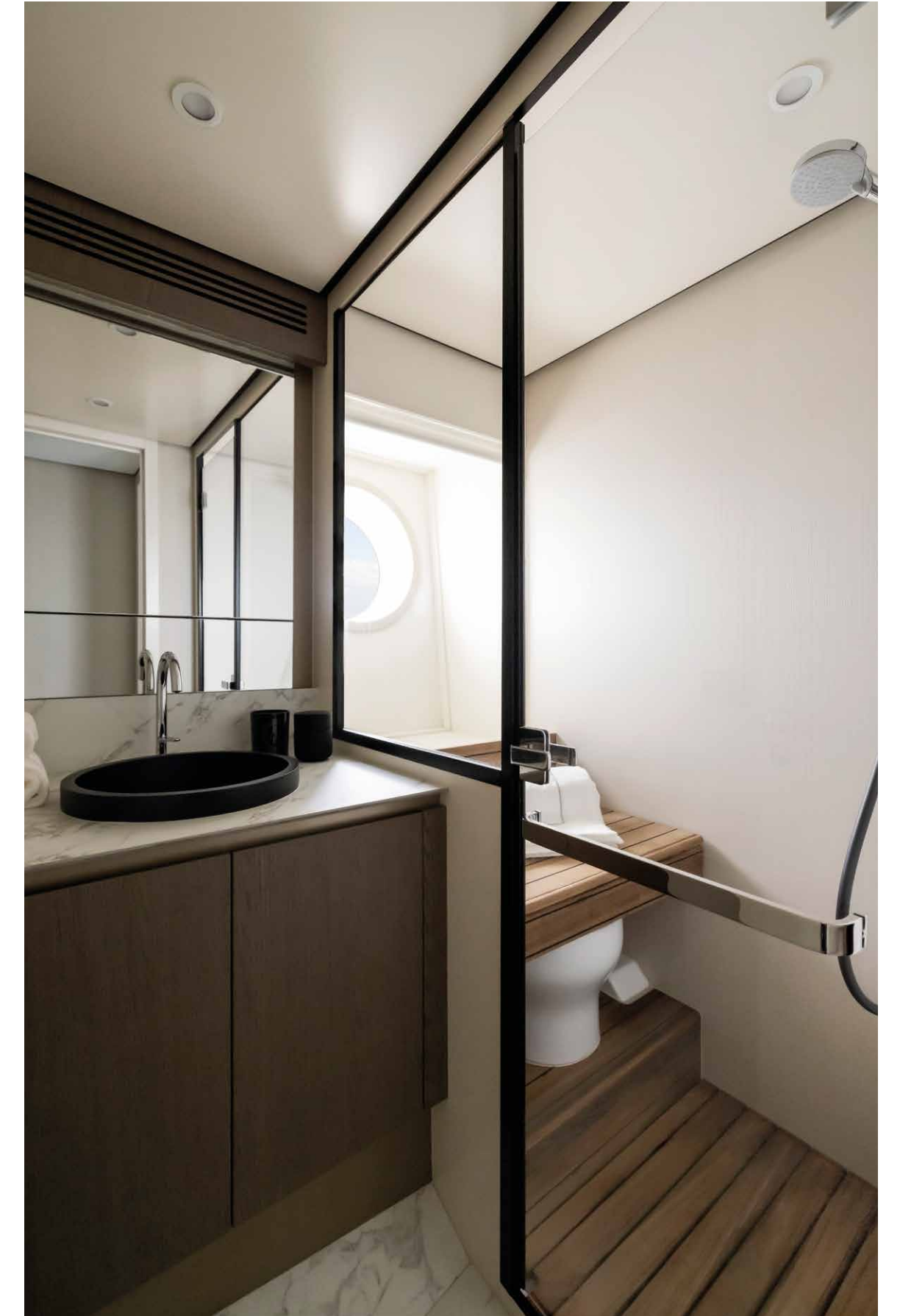




# AN OASIS OF WELLBEING



The interior design and decoration in the cabins are intended to envelop the owner in an oasis of wellbeing.



02

# HER MAIN TECHNICAL FEATURES



The beauty of the Magellano 60 is not solely a matter of exterior and interior design elements that combine to perfectly play out Azimut's essence.

Her beauty lies also in discovering the technological advancements and special components that contribute to making her truly unique and highly innovative.



# LOW EMISSION YACHT



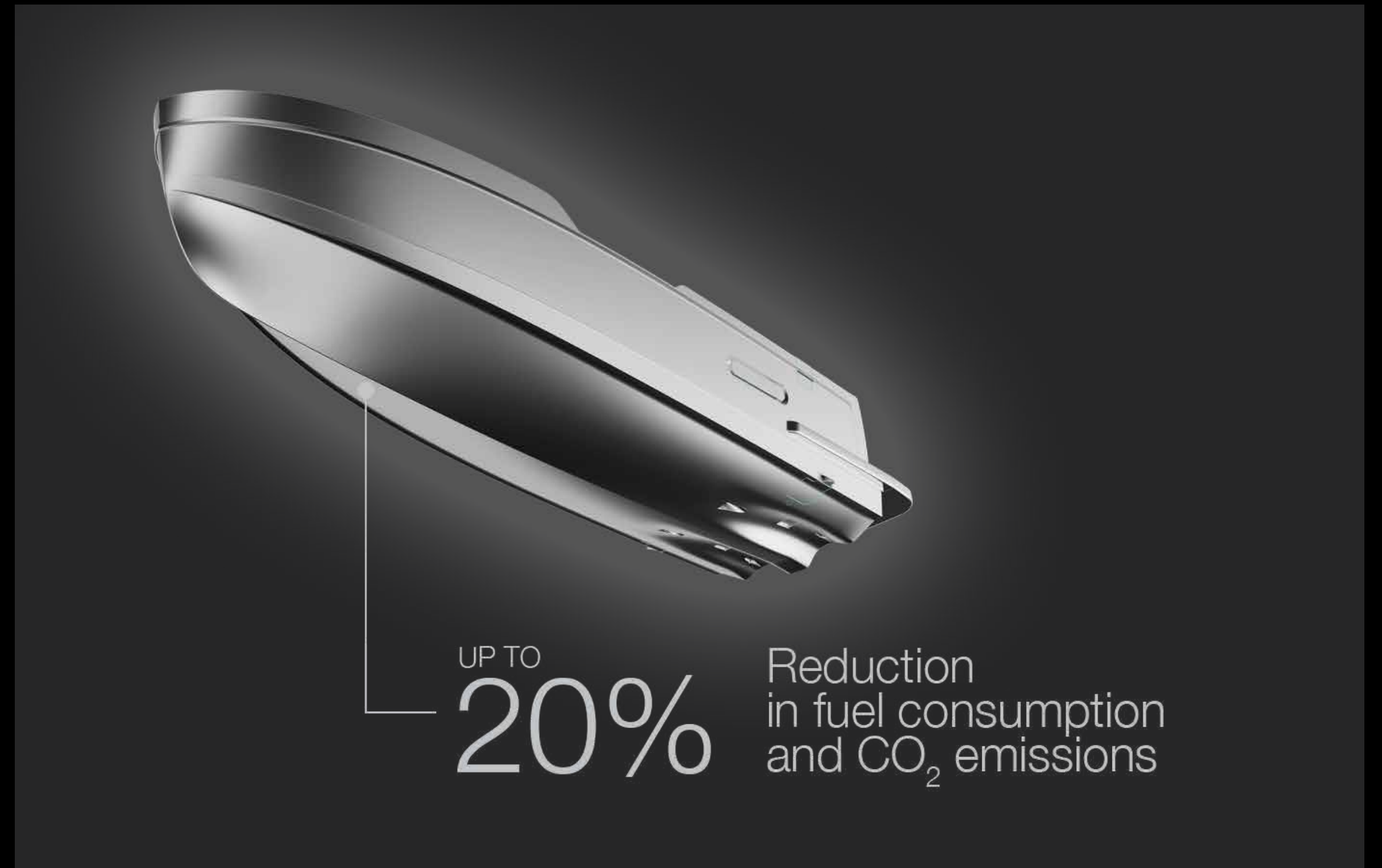
## DUAL MODE HULL

Exploring new frontiers, getting to know places of pristine nature and crystal clear waters also means trying to reduce emissions.

For this reason, the R&D office of the Azimut|Benetti Group brings to the Magellano 60 the high-efficiency semi-planing Dual Mode hull designed to optimize fuel consumption and emissions, especially at low and medium speeds.

Furthermore, the Dual Mode hull guarantees safety by satisfying a variety of needs, starting with seaworthiness: characterized by a marked deadrise at the bow, the hull allows smooth passage over the waves and has all the qualities to handle variable weather and sea conditions at a range of speeds.

Equipped with shaft-line propulsion, the crossover can comfortably cruise at 18 knots and reach up to 26, ensuring performance and comfortable navigation for guests on board.



# POWERED BY ENI HVOLUTION BIOFUEL

Magellano 60 is the first yacht powered by HVolution, the biofuel produced by Eni Sustainable Mobility with 100% renewable raw materials\*. The combined effect of the Dual Mode hull and biofuel has made it possible to achieve a reduction in CO<sub>2</sub> emissions well-to-wake exceeding -80% compared to a yacht of comparable size powered by fossil diesel, confirming the effectiveness of the path charted by Azimut.

\* Pursuant to the Directive UE 2018/2001 "REDII".



03

# MAGELLANO 60

## SPEC SHEET

# GENERAL CHARACTERISTICS

LENGTH OVERALL	18,47 m	60' 7"
BEAM MAX	5,15 m	16' 11"
DRAFT	1,37 m	4' 6"
DISPLACEMENT	34,92 t	76985 lb
ENGINES	2 X MAN i6 730 hp	
MAXIMUM SPEED	up to 26 kn	
CRUISING SPEED	18 kn	
KEEL	Semiplaning Dual Mode Hull	
FUEL CAPACITY	3650 l	965 US Gal
WATER CAPACITY	740 l	196 US Gal
CABINS	3 + 1 crew	
BERTHS	6 + 1 crew	
HEAD COMPARTMENTS	3 + 1 crew	
BUILDING MATERIAL	GRP	
EXTERIOR DESIGNER	Ken Freivokh	
INTERIOR DESIGNER	Azimut Yachts	
HULL DESIGNER	Profjord & Azimut R&D Dept.	
BUILDER	Azimut Yachts	
CERTIFICATIONS	CE B; NMMA	

Last updated 09.2023

Please consult your dealer for the latest specifications.

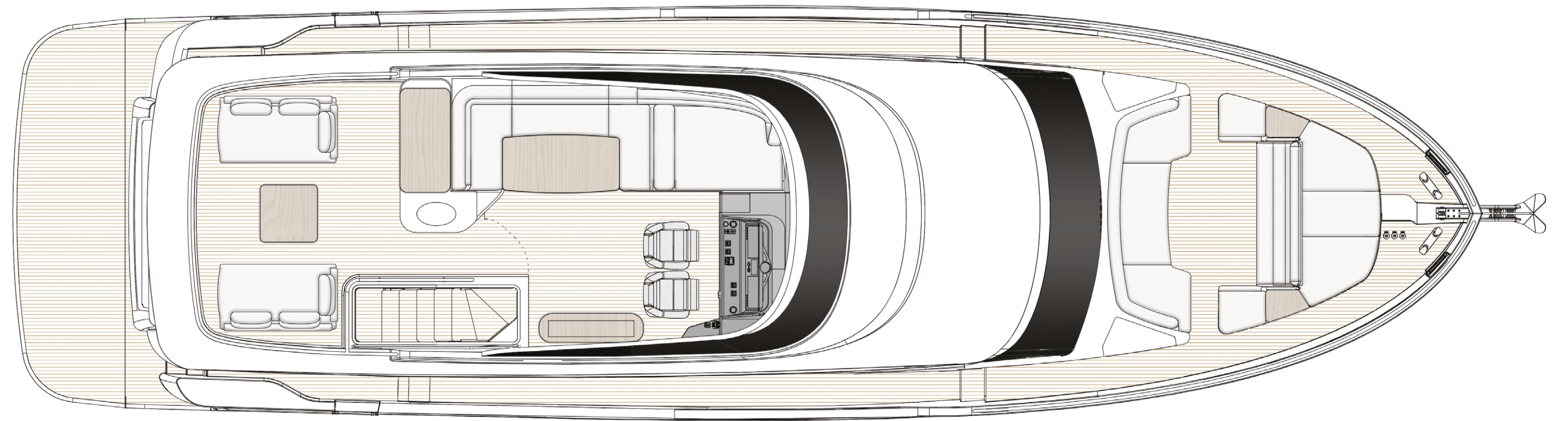
UNI ISO 8666

The performance described applies to a vessel with standard configuration (standard equipment installed) and a clean hull, propellers, and rudder. It is also noted that the performance described was recorded under favourable sea and wind conditions (Beaufort scale index 1, Douglas scale index 1); different and worse sea conditions could significantly impact performance.

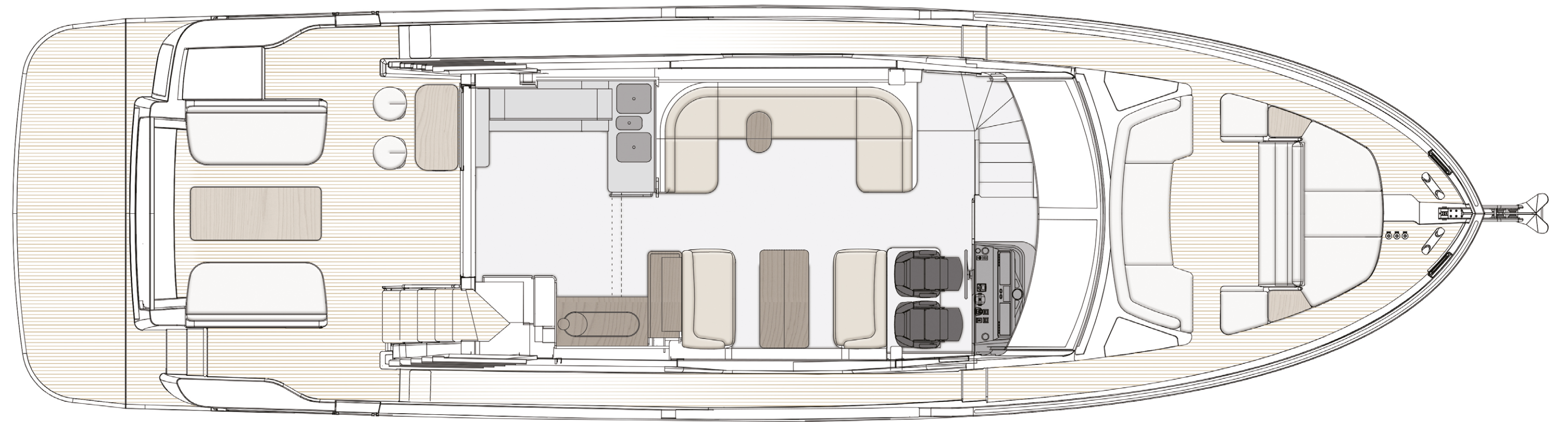
CE MARK

Given the continual evolution of technology, Azimut | Benetti S.p.A reserves the right to modify the technical specifications on its vessels at any time and without prior notice.

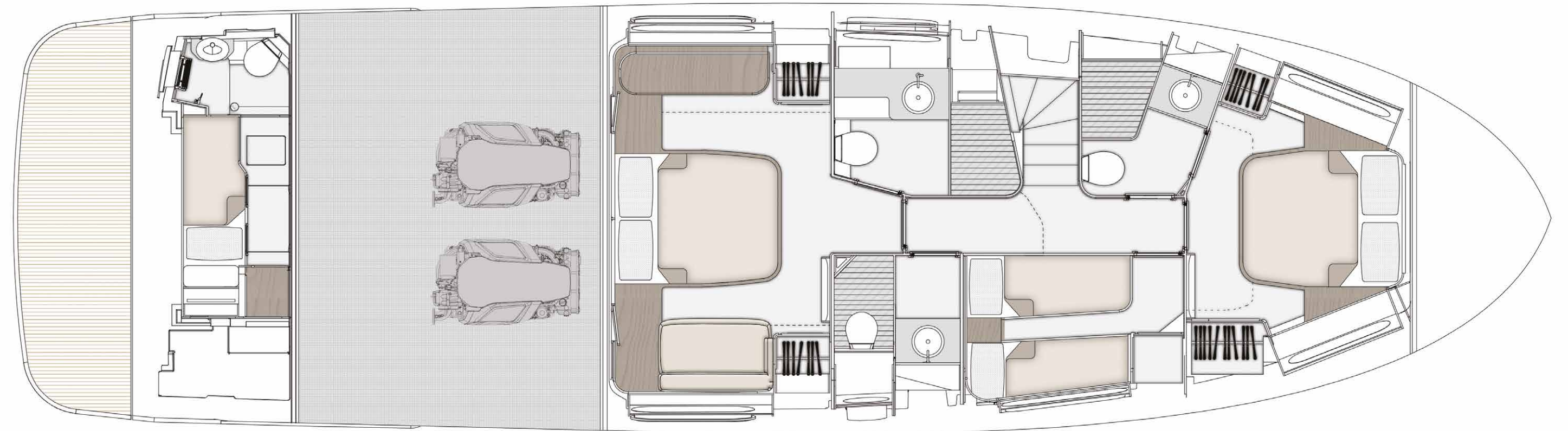
# FLYBRIDGE



# MAIN DECK



# LOWER DECK





04

# THE MAGELLANO SERIES

# THE TIMELESS YET CONTEMPORARY CROSSOVER

Epitomizing the spirit of adventure and discovery, the Azimut Magellano Series represents a timeless yet modern-day milestone of innovation. As the first nautical crossover ever designed, its concept aims to evoke the profound relationship of sea connoisseurs with the marine habitat, accomplishing construction savoir-faire to offer tranquil, long-range journeys in all weather conditions and classically sophisticated interiors with thoughtful storage space.

Prepare to savor your time at sea, navigating the world at your own personal pace.

60  
66  
25M  
30M



05

# ABOUT AZIMUT



# A FAMILY-MADE COMPANY CULTURE

An immense and personal passion for the sea. A clear and forward-facing attitude. A strong and relentless work ethic. Since 1969, Paolo Vitelli, the creative visionary founder and businessman behind Azimut, has been set on challenging the industry's status quo with a daring desire: bring to life an unexpected nautical experience, through yachts built to combine alluring aesthetics with construction expertise and impeccable technology.

An audacious mindset that has, over time, surprised and captivated the yachting sector, transforming Azimut into a bold and recognizable benchmark, and laying the foundation for the birth of the largest megayacht builder in the world, the Azimut | Benetti Group.

The international and management-based standing of the company today, is deeply nourished by the solid and memorable family heritage that has distinguished it from the beginning. A historically pioneering vision that enables it to continue thriving day after day, through ingenious inventions and long-term goals that look to the future with Paolo's daughter, Giovanna Vitelli.

# A SUSTAINABLE VISION TODAY, FOR TOMORROW

An avant-garde vision and a strong emotional appeal have shaped the history of Azimut as a leader in the field of nautical innovation as well as its commitment to the creation of a sustainable-oriented and attentive company culture today.

An ambitious and personal touch that has allowed Azimut to grow and evolve on both levels, embracing the challenge of a future nurtured by an eco-conscious approach to boat construction and by an authentic focus and responsibility on human well-being.





# OUR ♻️ ECO-YACHTING PHILOSOPHY

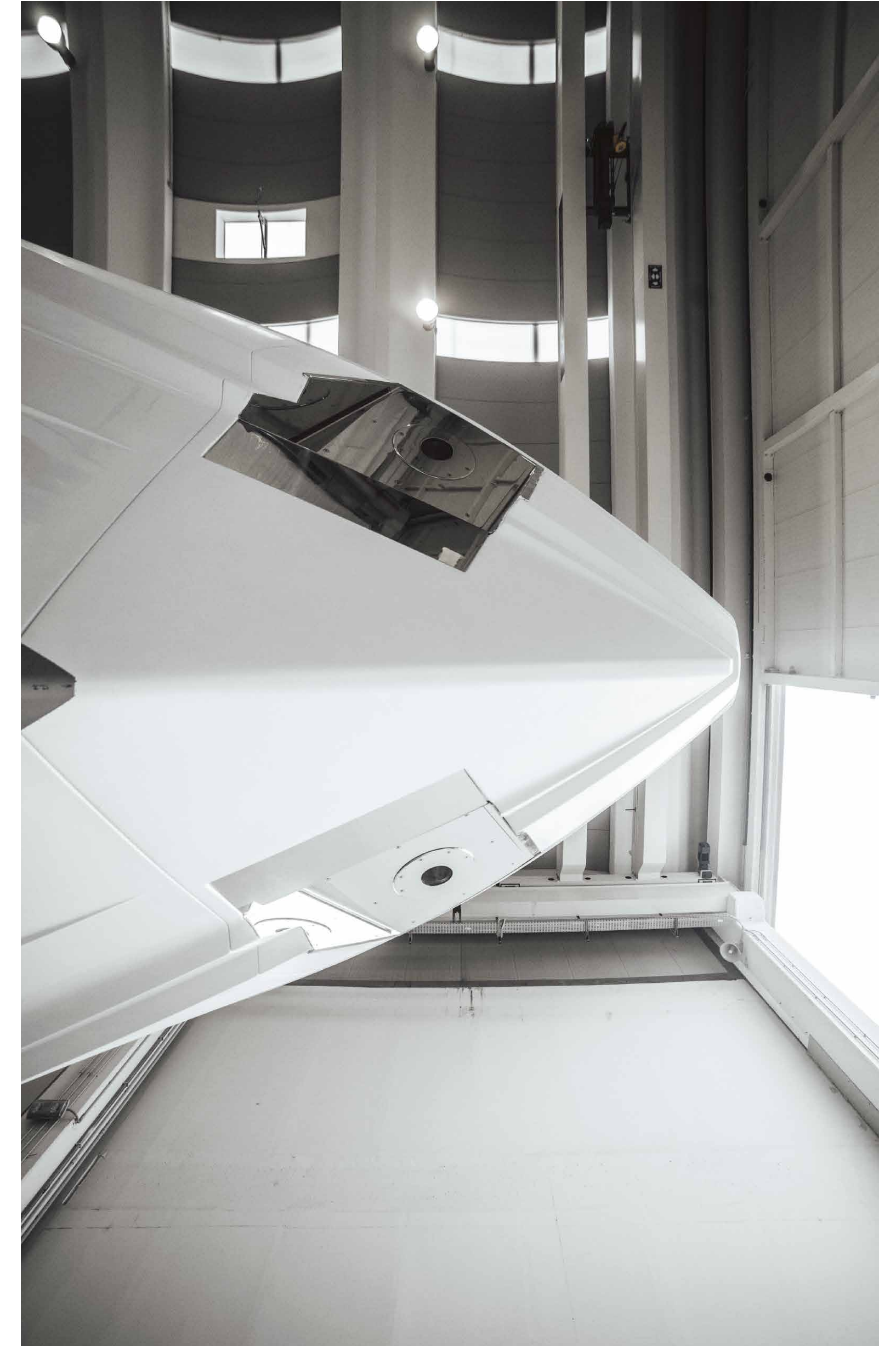
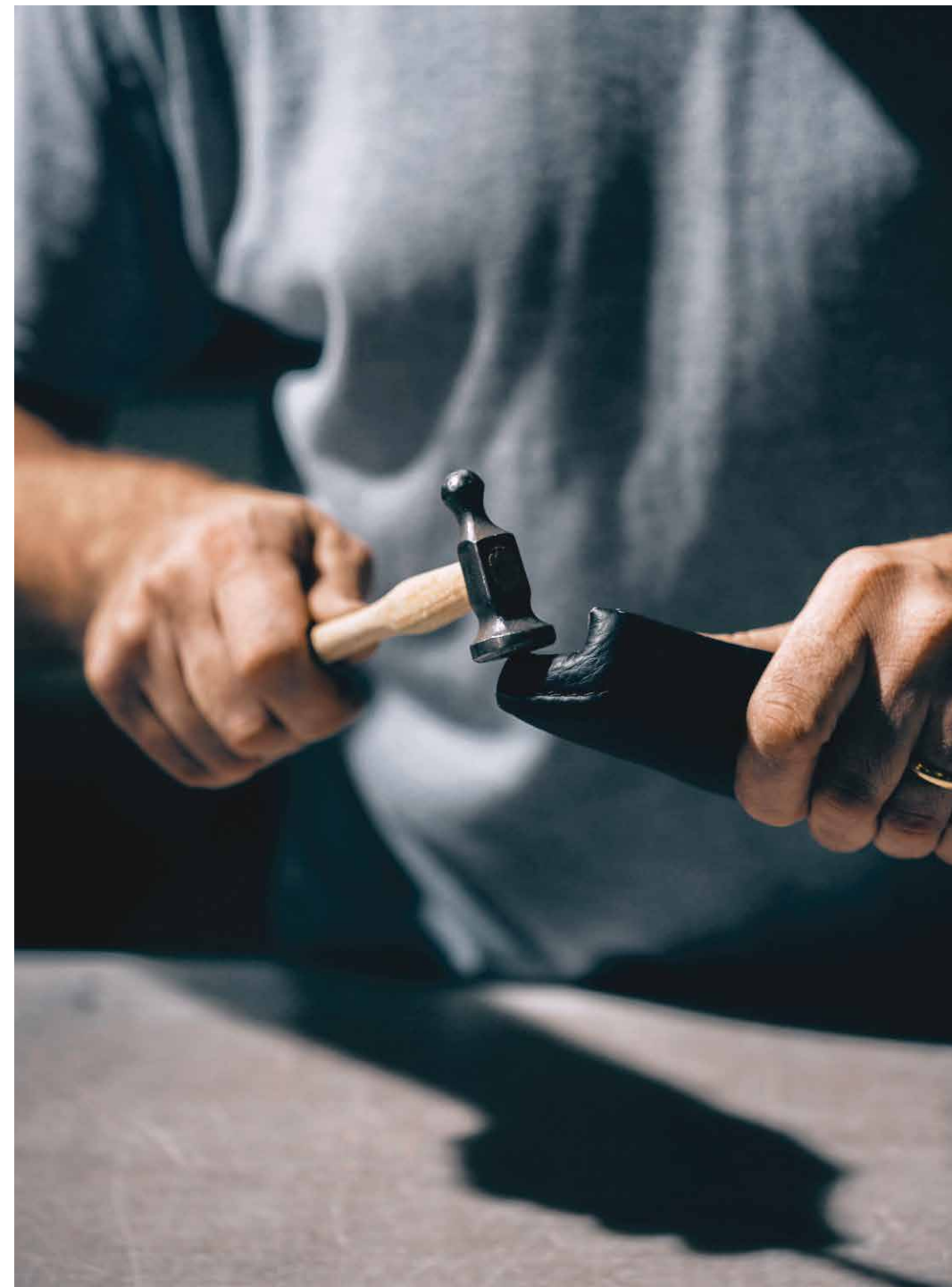
The Azimut I Benetti Group has made tangible investments to guide the Technical as well as the R&D departments toward the construction of yachts with a diminished environmental impact. Its main areas of intervention have focused on significantly lowering fuel consumption and CO<sub>2</sub> emissions through the development of highly efficient hull designs, innovative propulsion systems and an extensive use of carbon fiber to decrease yacht weight.



# A SAFE AND HEALTHY WORK ENVIRONMENT

The forerunning shipyard of Avigliana was the first of the company's Italian shipyards to obtain the ISO 45001 certification in 2011, attesting its rigorous abidance to all occupational health and safety requirements. Recognized as the most technologically-advanced shipyard in Europe, it has also led the nautical sector revolution in terms of being among the earliest adopters of the vacuum infusion process to drive resin into a laminate, avoiding styrene emissions and therefore guaranteeing its precious workers a healthier setting.

As of 2013, all the other Italian production sites have adapted to meet the necessary requirements to obtain the ISO 45001 certification.





# A GLOBALLY-CONNECTED DEALER AND SERVICE NETWORK

---

5 SHIPYARDS

---

6 DIRECT OFFICES

---

138 OFFICIAL DEALERS

---

80 COUNTRIES

---

The highly widespread commercial network put in place by Azimut Yachts, allows the company to offer a continuous presence to its ship owners, concretely curating their demands by meeting their most specific needs.

[Find your Dealer →](#)



# THE LARGEST PRIVATE GROUP IN THE YACHTING WORLD

Azimut is part of the Azimut | Benetti Group, the biggest private player and shipbuilder in the nautical sector today. The Vitelli family, the founder and majority shareholder of the company, has been leading the way for over fifty years now, continuing to innovate through the Group's main yacht brands, Azimut and Benetti, while developing a variety of service brands to cater to the different demands of ship owners worldwide.



# OUR SHIPYARDS MAKE US PROUD

Avigliana — Italy

HQ / SHIPYARD

Savona — Italy

DELIVERY CENTRE

Viareggio — Italy

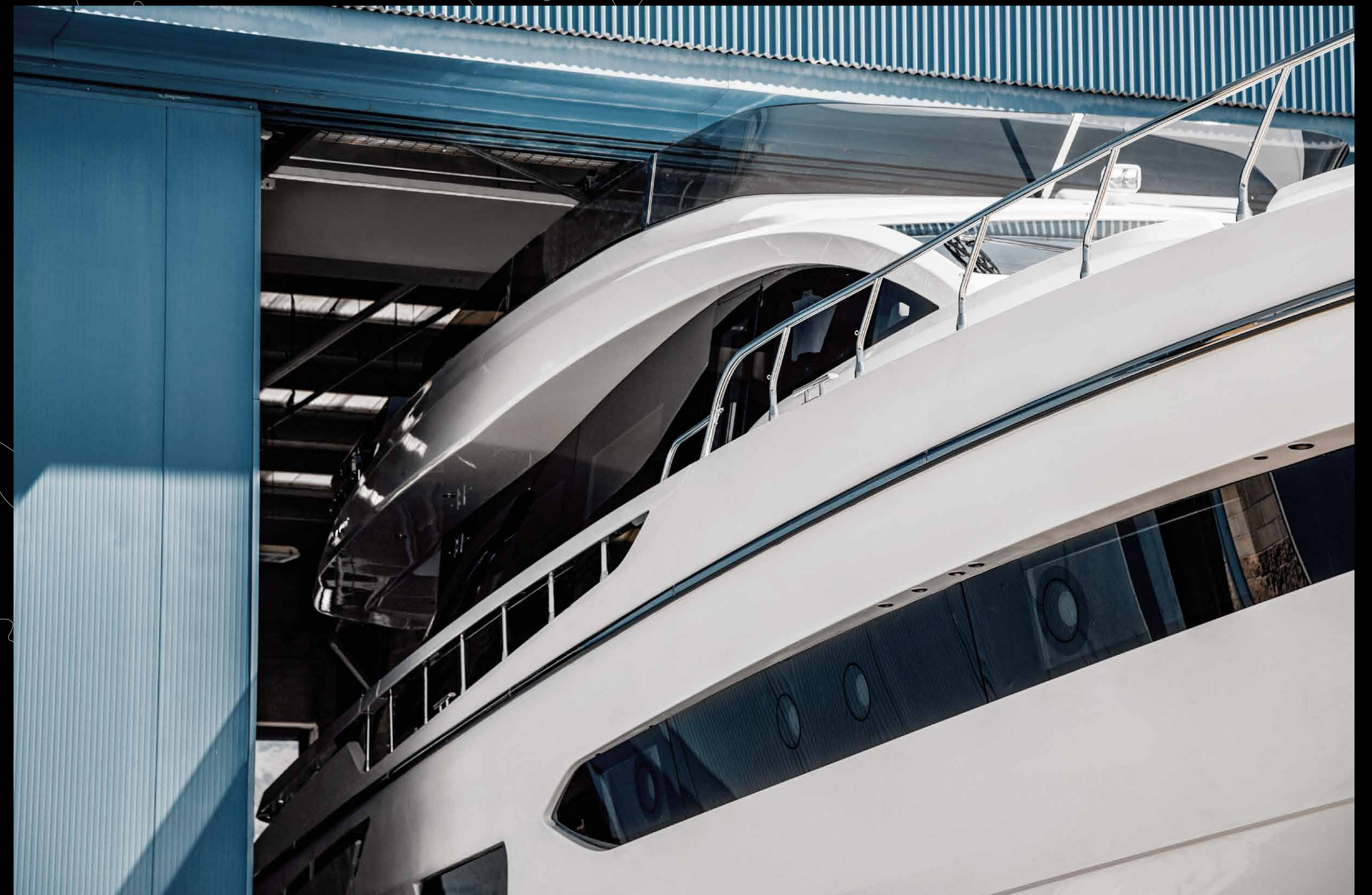
SHIPYARD / STYLING LOUNGE

Fano — Italy

SHIPYARD

Itajaí — Brazil

SHIPYARD





CONCEPT & DESIGN: APART

OFFICIAL PARTNERS



GARMIN.

NAVICO  
GROUP

Raymarine

SEAKEEPER

VOLVO  
PENTA

AZIMUT | BENETTI SPA  
VIA MARTIN LUTHER KING, 9  
10051 AVIGLIANA, TORINO  
ITALY

RELEASE 01.24

This brochure in no way constitutes a contract of sale for the boatyard's vessels to any person or company. All information contained herein, including but not limited to technical and performance data, illustrations, and drawings, is non-binding and for purposes of illustration only. The information in this brochure refers to the boatyard's standard motoryacht models available as of the date of publication. Technical and descriptive information is valid only to the extent that it pertains to the specific vessel that is the subject of a purchase. Contract terms are valid only to the extent that they are contained in a contract of sale. This document is based on information available at the time of publication. Despite efforts to ensure the greatest possible accuracy, the information contained herein may fail to cover all details, omit technical or commercial changes that may have been made subsequent to publication, describe features that are not present, and fail to envisage all circumstances that might occur. Any illustrations, photographs, diagrams and examples shown in this brochure are included solely for the purposes of illustrating the text. Due to the different features of each vessel, the boatyard assumes no liability for actual use based on the illustrated applications.

AZIMUT

[azimutyachts.com](http://azimutyachts.com)

