

^ZIMUT



MAGELLANO 66



# INDEX

01	THE DESIGN & LIFESTYLE ON BOARD	P04
02	HER MAIN TECHNICAL FEATURES	P32
03	MAGELLANO 66 SPEC SHEET	P37
04	THE MAGELLANO SERIES	P42
05	ABOUT AZIMUT	P44



A one-of-a-kind beauty, enrapturing,  
that steals your breath away, leaving you  
speechless. An extraordinary idea as the only  
possible pathway, to get to where you want,  
to explore, to go beyond.

The freedom of embracing the unknown,  
that you know you'll love as a part of  
your very own story. A thought that provokes  
your mind and then inspires you to aim for the  
impossible, making mistakes, yet being brave.  
A magic je ne sais quoi that enchants and  
intrigues you, moving you to feel more and  
to sense uniqueness.

The choice to risk it all, the one that makes you  
go for it, to impress yourself and all those who  
are worth it.

AZIMUT.  
DARE TO AMAZE.



01

# THE DESIGN & LIFESTYLE ON BOARD



# MAGELLANO 66, A PERSONAL NAUTICAL NARRATIVE

Conceived for blissfully reserved sea voyages, the Azimut Magellano 66 complements its crossover character through the possibility of a privacy-oriented onboard design. The large, single-level main deck aptly appeals to diverse lifestyles, offering either a unique open space solution with semi-secluded flows to lightly separate guests from crew or the Navetta layout for a completely independent galley and wheelhouse.

Explore your nautical lifestyle on the Magellano 66.









Welcome aboard, ladies and gentlemen.

Let us begin the tour.







# THE AZIMUT CROSSOVER





The Magellano 66 perfectly embodies the DNA of the Magellano Collection with elegant lines and a powerful hull, whose bulwarks that rise to protect the side walkways. Below, elongated hullside windows recall nautical tradition with a rounded shape, and, above, wooden louvers positively punctuate the superstructure's aft end.









The outdoor living areas are conceived for relaxation and contact with the natural environment. Ribbed cabinetry adds to the air of simple, harmonious sophistication.





# SUSPENDED BETWEEN SEA AND SKY

The flybridge is a wide, panoramic deck under the sun, with an external helm adjacent the dinette. The flybridge of the Magellano 66 has been enlarged to full beam in the aft part, which can be configured with additional storage and an American bar or left open for freestanding furniture.







# DESIGNED WITH WELCOME

In the cockpit, the extended sofa wraps around a vast dining table. There is room for all the guests to gather on this sheltered-yet-open-air lookout, and the aft-most backrest can be stowed away to reveal a glass parapet. The infinity terrace effect breaks down the barriers to a clear view of the waves.





[ Opening wide onto the horizon. the cockpit is immersed in the sensations of the marine environment, with minimalist design and an unexpected use of glass. ]



# THE SPIRIT OF THE JOURNEY

Destined for long-range cruising, the Magellano 66 combines comfort and performance for a pleasantly stable life on board. Aiding in her mission, the layout offers airy internal spaces and leaves room for an abundance of storage.









The flush main deck welcomes you home to the sea, into a glass house that selects the essentials of sophisticated life. For the occasional indoor meal, the dining table may be extended to host up to eight guests.





# THE JOURNEY WITHIN

The interior design is characterized by coziness and elegance. Atmospheres that seem suspended in time are the perfect accompaniment for long-range journeys, a balance for harmonious travel with elegantly refined yet warmly welcoming decoration. The storage spaces are studied with an awareness of their essential role, where and how much they are needed.

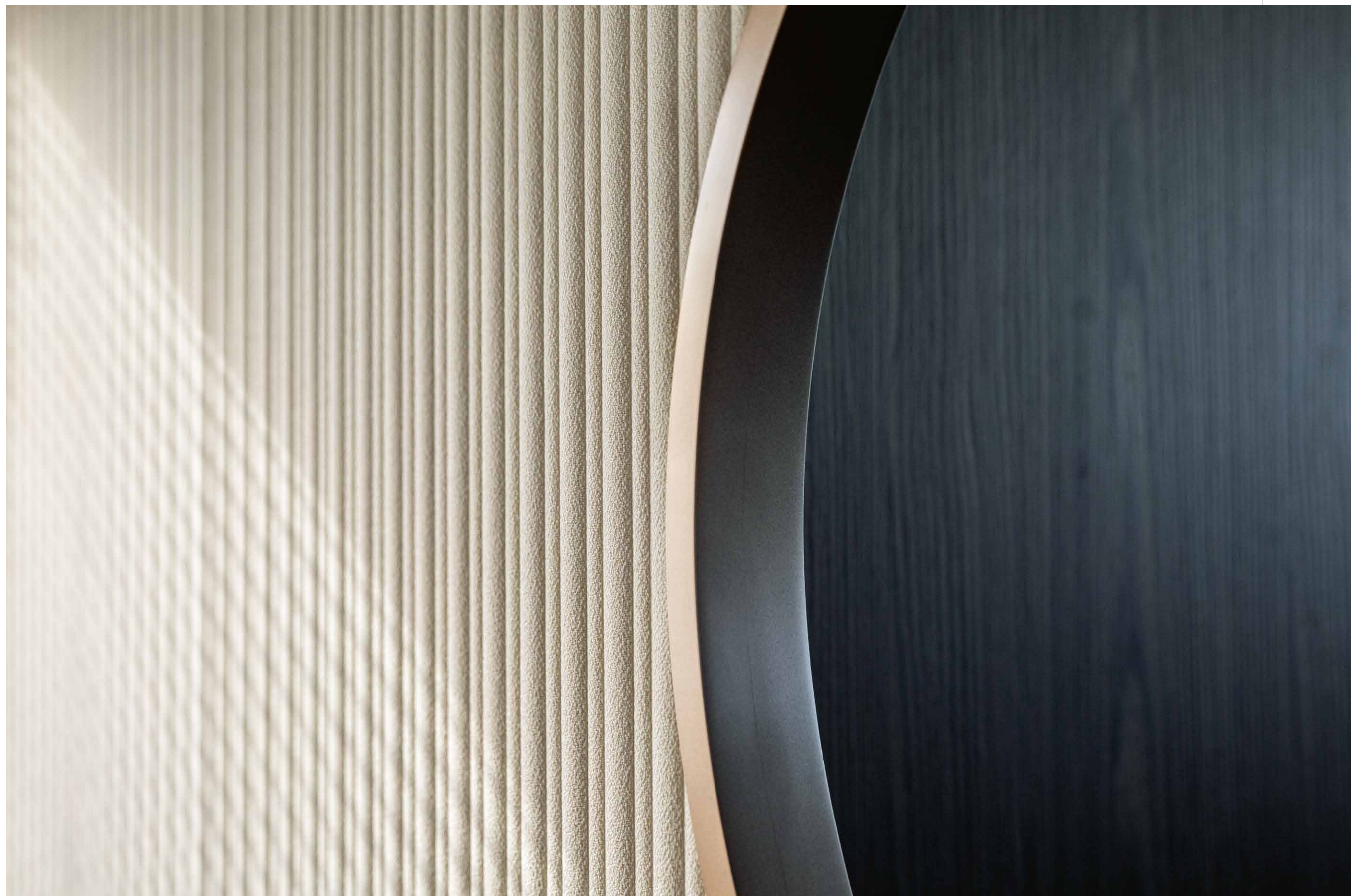




[ The dining is served directly through a circular pass-through.  
Or, if the guests wish to cook, they can communicate with those  
at the table. For the occasional indoor meal, the dining table may  
be extended to host up to eight guests. ]

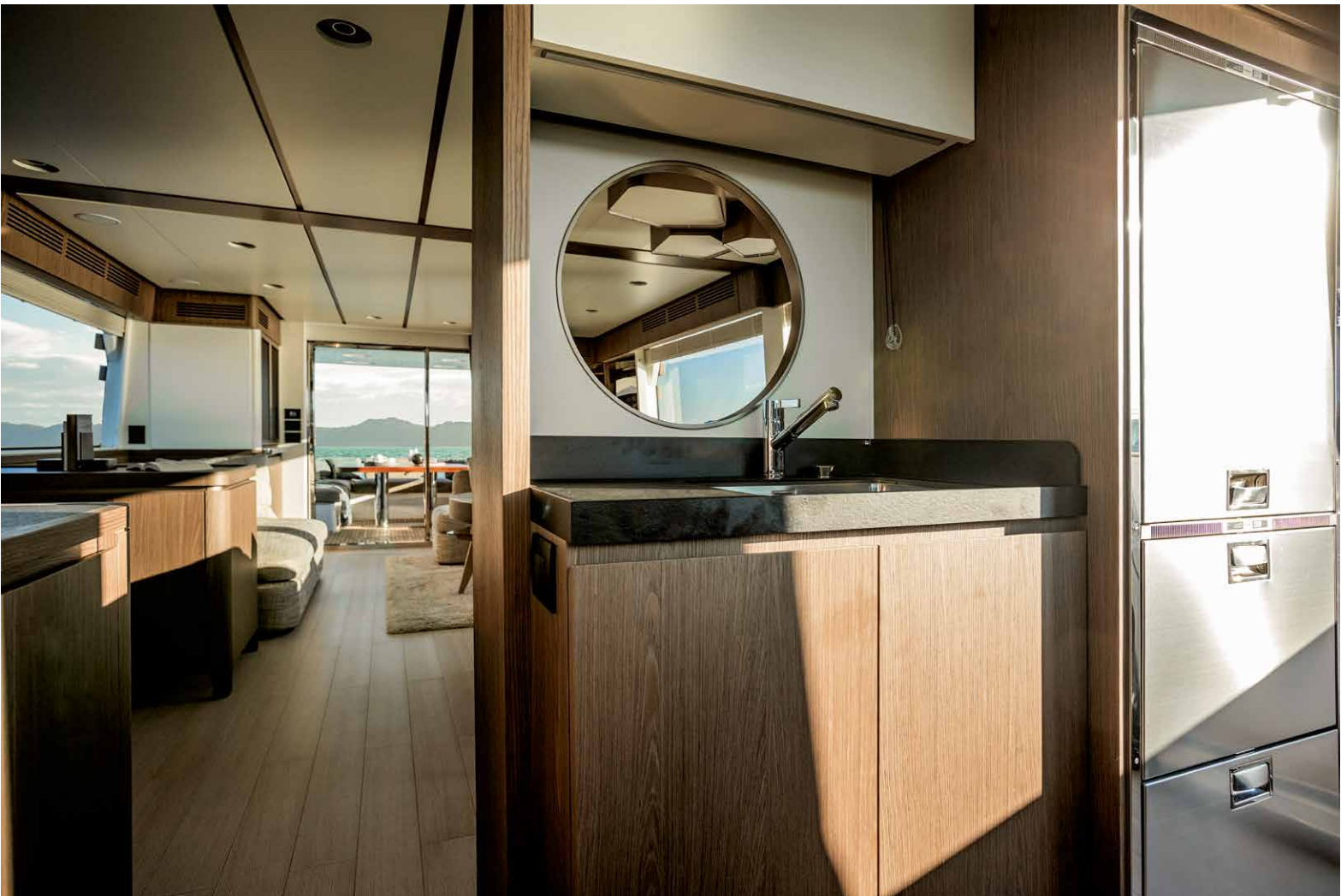






# THE ART OF DAILY LIFE







# NAVETTA VERSION

The main deck layout already separates crew and guest flows, even as a unique open space, protecting the working areas from disturbances. The second layout possibility, named Navetta, takes privacy up a class by completely secluding the galley and wheelhouse area, which can be accessed directly via the side door. True to its name, the Navetta version also allocates additional storage for provisions.





# NAVETTA VERSION



Now, let us discover the guest accommodations.

Shall we?









# FLOODED BY LIGHT AND SOAKING IN CHARM



The supremely cozy master suite showcases modern design, such as the pattern of slatted wood behind the head of the bed. A vanity desk port, well served by convenient storage, takes full advantage of the exceptional hull-side windows. On the starboard side, there is a seating area. To properly move the owner in, the suite offers one oversized closet with the height for long dresses and shoes, and a second men's wardrobe.

[ Blue-green velvet upholstery cools off a bright, warm stateroom with the refreshing palette of the sea. ]







[ The VIP continues to elaborate the design language into the bow, with a stateroom wonderfully lit by sunlight through the two wide windows. Finished with cool stone counters, the en-suite bathroom completes this oasis of relaxation. ]





[ In addition to the master and the VIP, there are two double cabins for two guests each. One of them has direct access to the day head for more comfortable nighttime use. ]





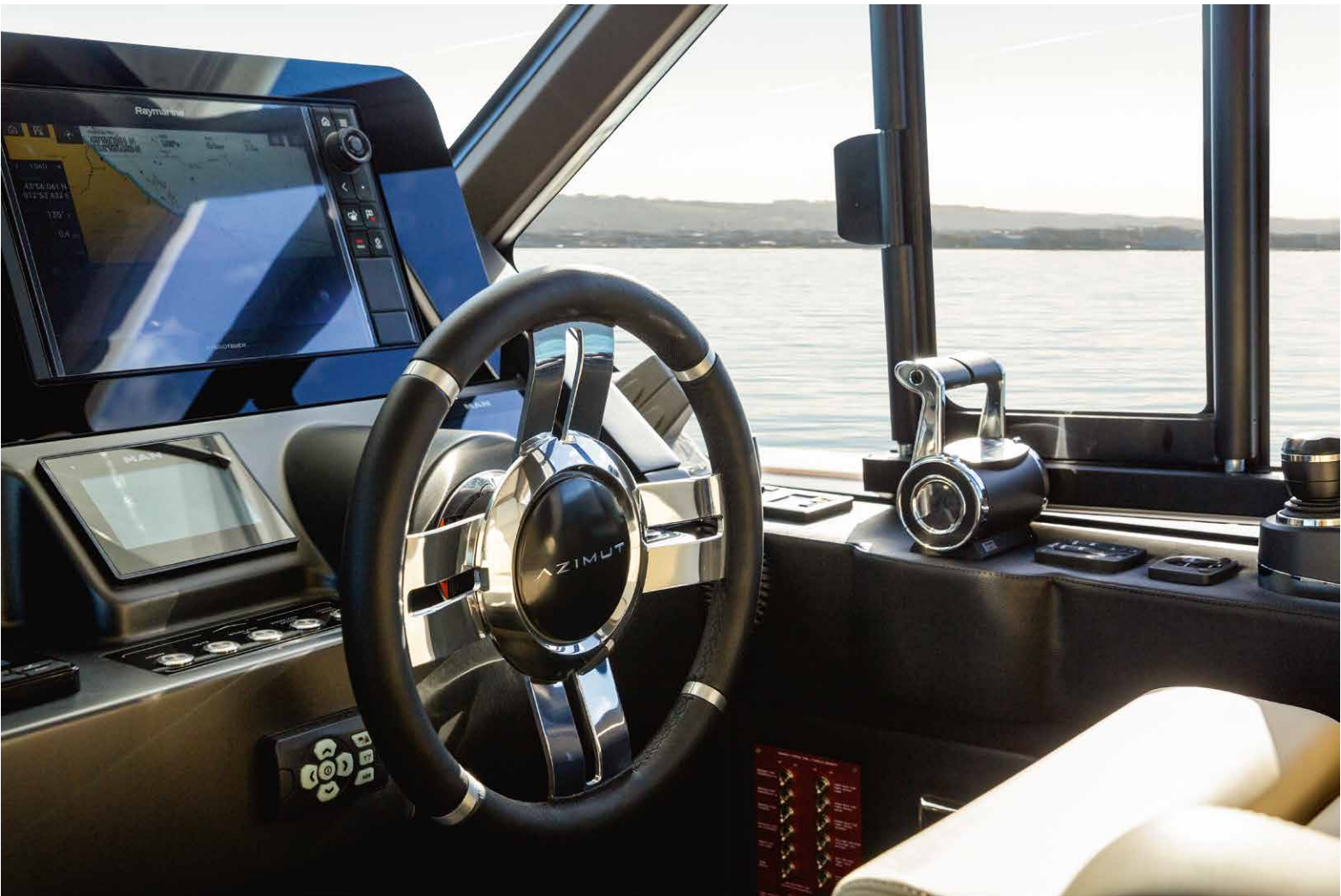
[ The space for a crew bed and bathroom is provided in the transom, with a wide window and access under the life-up stair. ]







MAGELLANO 66



AZIMUT YACHTS





02

# HER MAIN TECHNICAL FEATURES



The beauty of the Magellano 66 is not solely a matter of exterior and interior design elements that combine to perfectly play out Azimut's essence.

Her beauty is also about discovering the technological advancements and special components that contribute to making her truly unique and highly innovative.



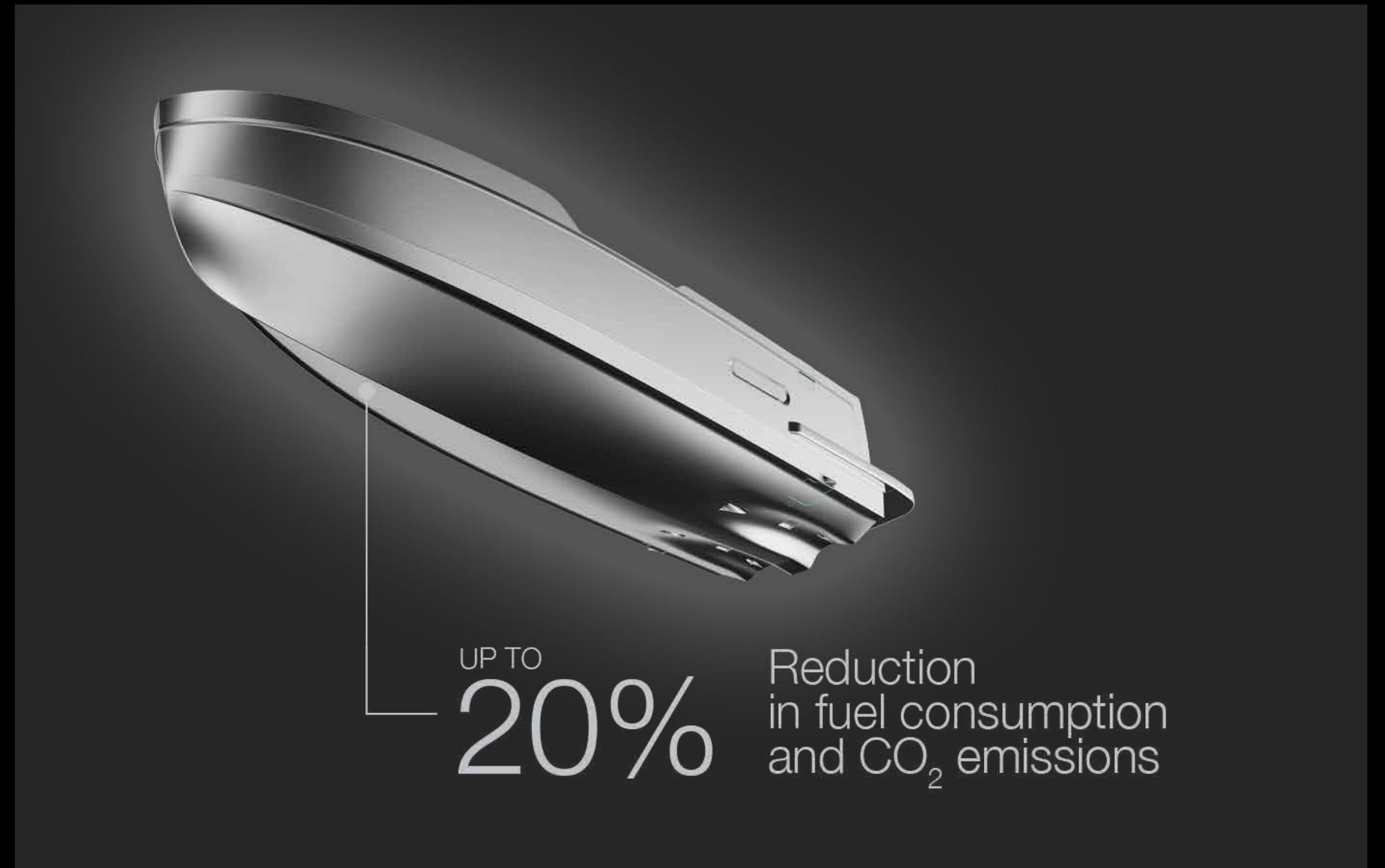
# LOW EMISSION YACHT



## DUAL MODE HULL

The Dual Mode hull is a highly efficient semi-planing hull designed to reduce fuel consumption and CO<sub>2</sub> emissions by up to 20 at medium speeds\*, guaranteeing superior navigation comfort in a wider range of sea conditions. The double-chine hull, combined with the vertical bow, minimizes the impact of waves and thus offers greater freedom of navigation, cruising comfortably at low speeds for extended durations as well as at higher speeds.

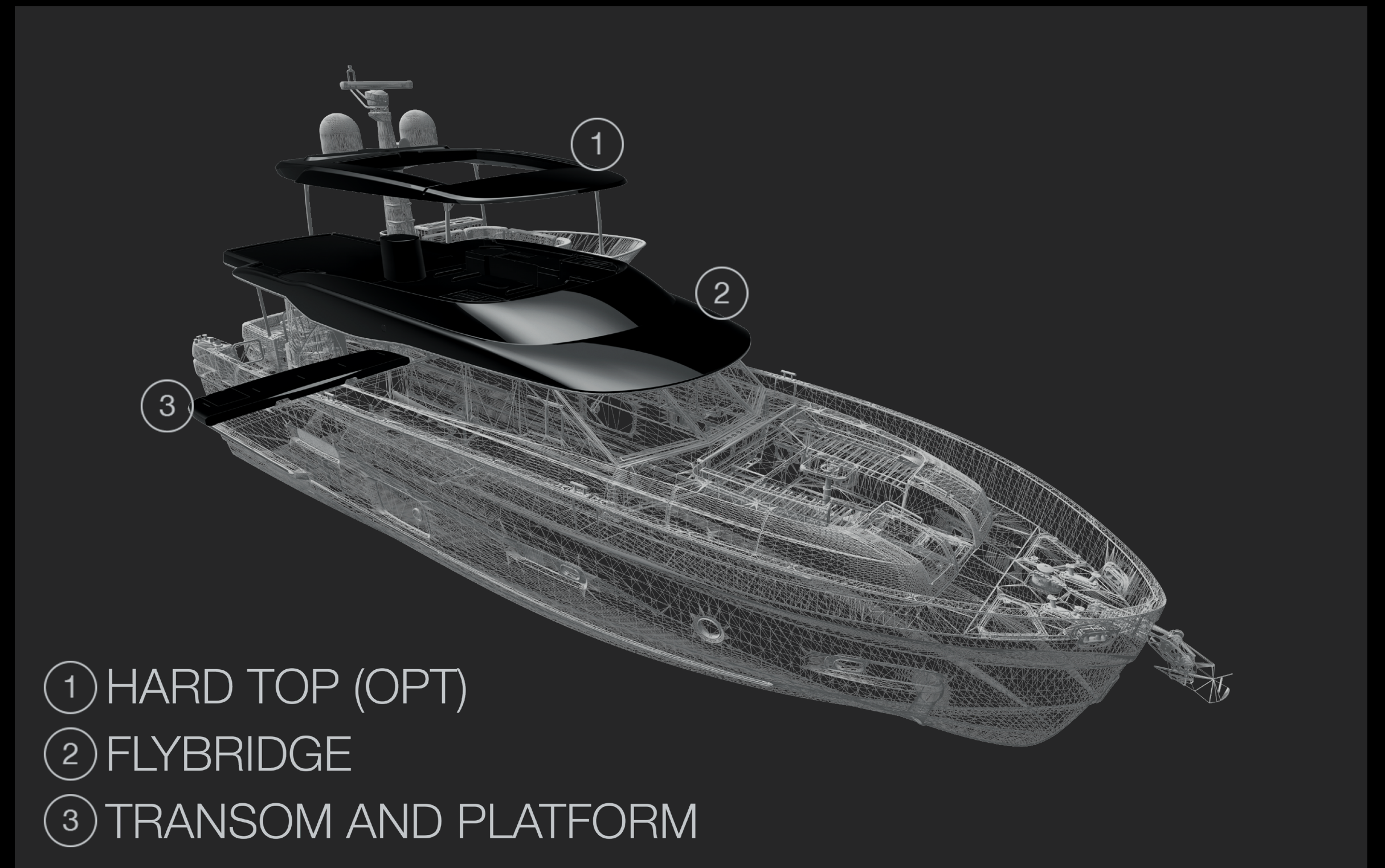
\*compared to vessels of the same weight and size with a traditional hard-chine hull





# CARBON-TECH GENERATION

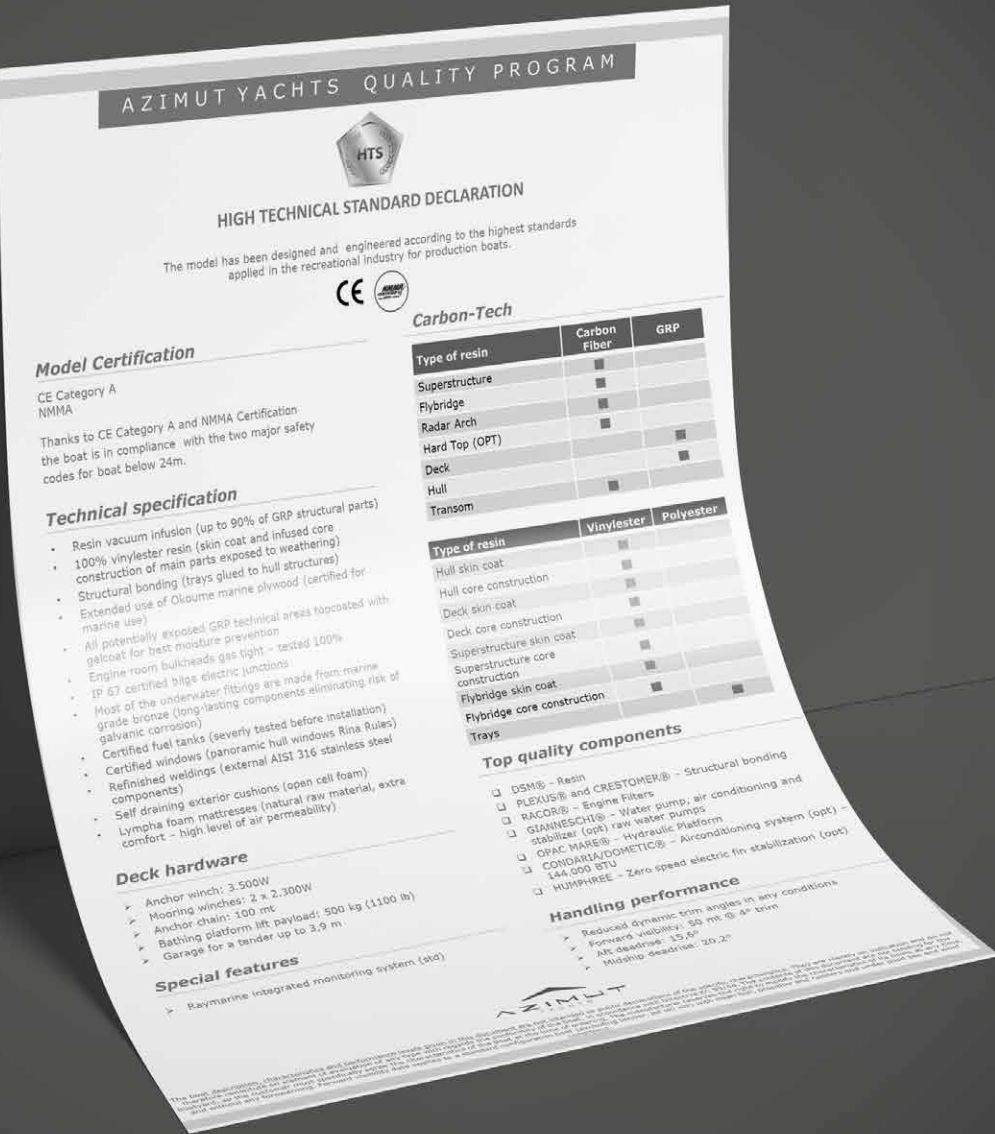
Azimut's pioneering use of carbon fiber lamination goes beyond pure performance. The Carbon Tech Generation offers expanded volumes on board, while maintaining excellent dynamic stability and perfect handling. Preserving the yacht's low center of gravity, the carbon fiber was focused on the upper parts of the yacht, lightening the laminated components by up to 30% and reducing the natural roll momentum up to 15%.





# HTS HIGH TECHNICAL STANDARD DECLARATION

This yacht’s design and engineering meet the highest standards for production recreational vessels. Azimut Yachts issues a declaration of the premium materials, advanced technology and rigorous testing procedures.





03

# MAGELLANO 66

## SPEC SHEET



# GENERAL CHARACTERISTICS

LENGTH OVERALL	20,15 m	66’ 1”
BEAM MAX	5,54 m	18’ 2”
DRAFT	1,68 m	5’ 6”
DISPLACEMENT	46,4 t	102293 lb
ENGINES	2 x 850 hp (625 Kw) MAN i6	
MAXIMUM SPEED	up to 24 kn	
CRUISING SPEED	up to 19 kn	
KEEL	Semiplaning/semiplanante Dual Mode	
FUEL CAPACITY	4500 l	1189 US Gal
WATER CAPACITY	1000 l	264 US Gal
CABINS	6/8 + 2 crew	
BERTHS	3 + 1 jolly cabin + 1 crew	
HEAD COMPARTMENTS	3 + 1 crew	
BUILDING MATERIAL	Carbon Fibre + GRP	
EXTERIOR DESIGNER	Azimut Yachts	
INTERIOR DESIGNER	Azimut Yachts	
HULL DESIGNER	P.L. AUSONIO Naval Architecture & Azimut R&D Dept.	
BUILDER	Azimut Yachts	
CERTIFICAZIONI /CERTIFICATIONS	CE A; NMMA	

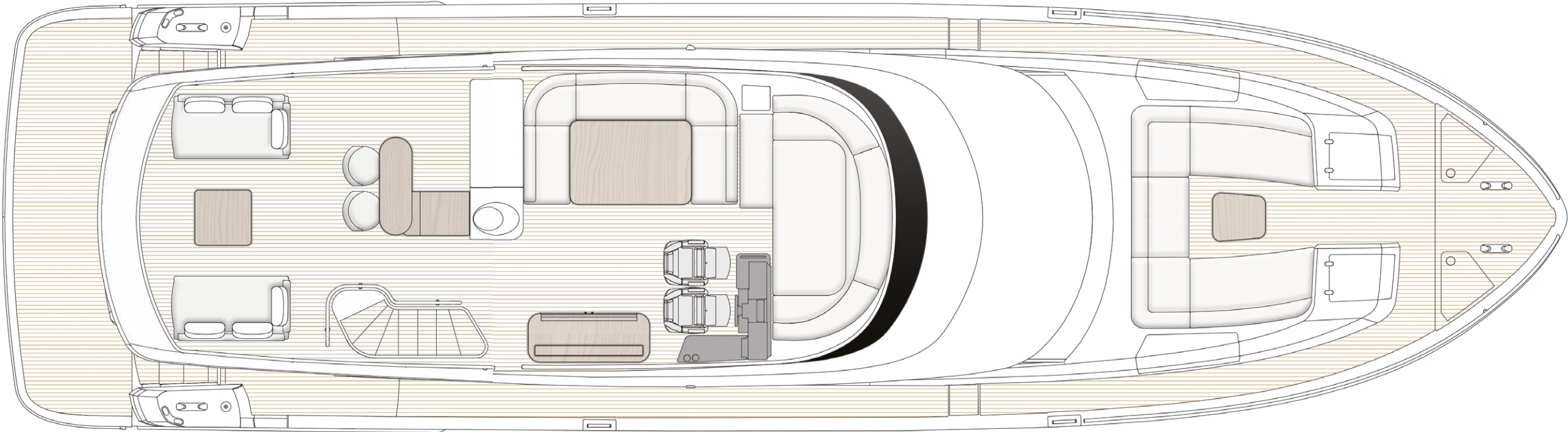
Last updated 10.2022  
Please consult your dealer for the latest specifications.

UNI ISO 8666  
The performance described applies to a vessel with standard configuration (standard equipment installed) and a clean hull, propellers, and rudder. It is also noted that the performance described was recorded under favourable sea and wind conditions (Beaufort scale index 1, Douglas scale index 1); different and worse sea conditions could significantly impact performance.

CE MARK  
Given the continual evolution of technology, Azimut | Benetti S.p.A reserves the right to modify the technical specifications on its vessels at any time and without prior notice.



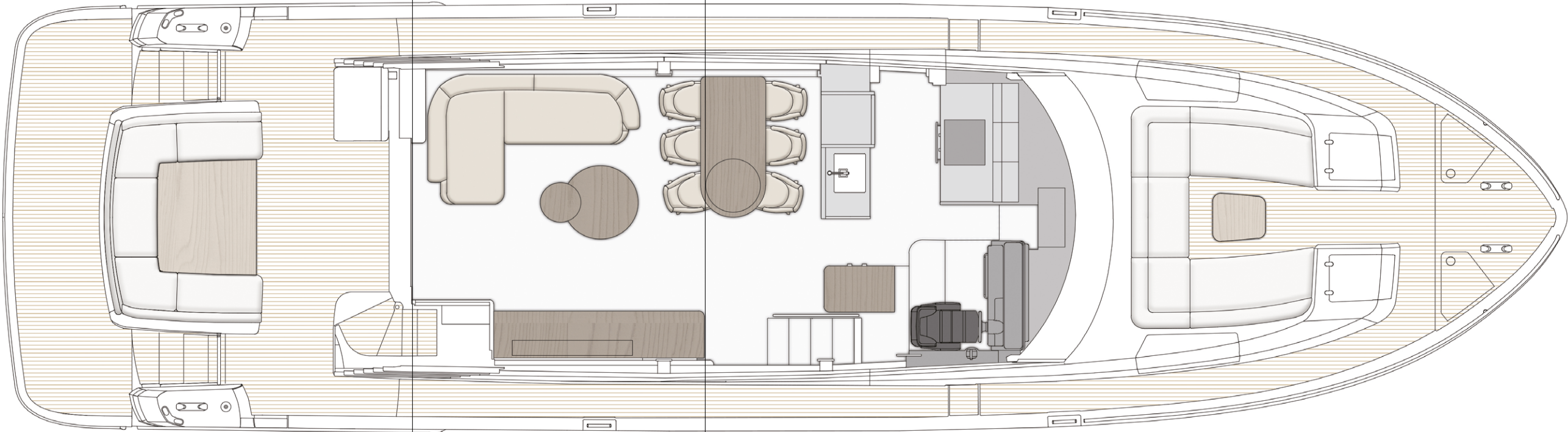
# FLYBRIDGE



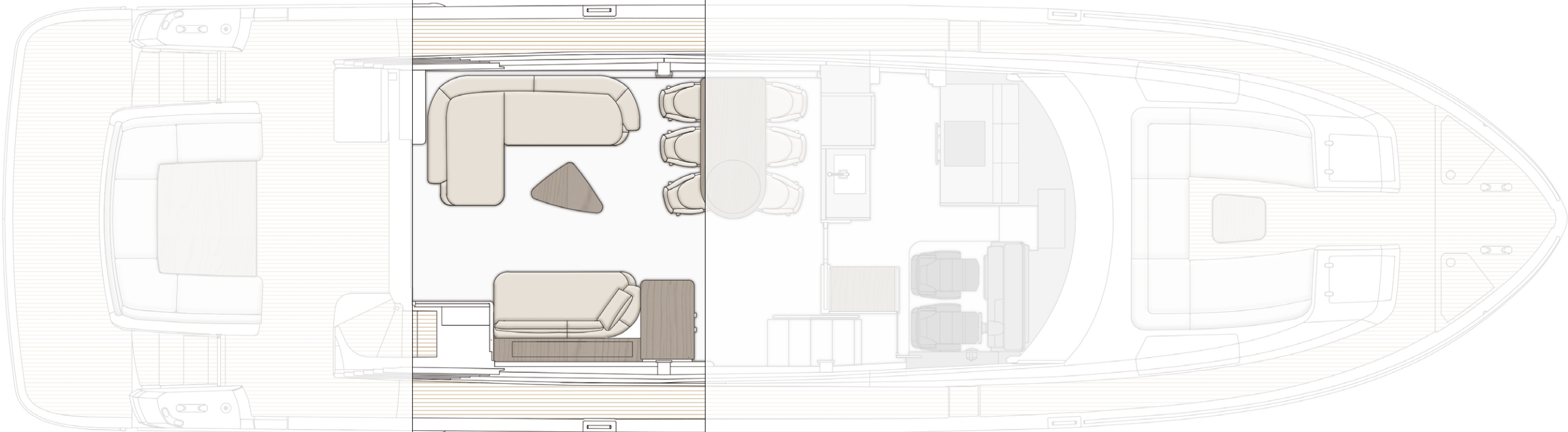


# MAIN DECK

MAIN DECK  
STANDARD VERSION

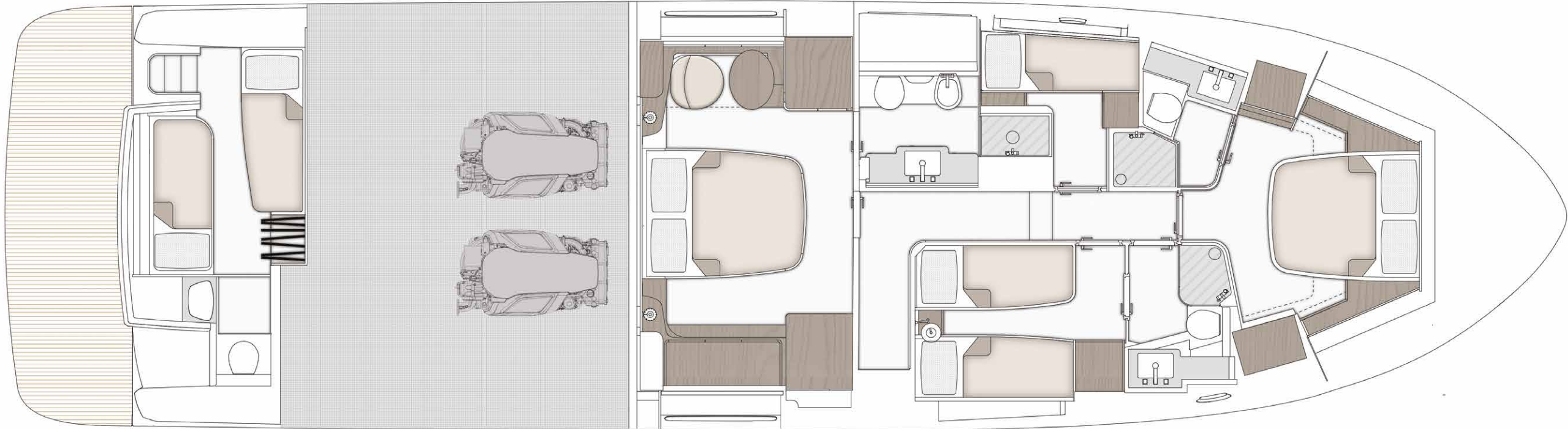


MAIN DECK  
LOUNGE VERSION





# LOWER DECK





04

# THE MAGELLANO SERIES



# THE TIMELESS YET CONTEMPORARY CROSSOVER

Epitomizing the spirit of adventure and discovery, the Azimut Magellano Series represents a timeless yet modern-day milestone of innovation. As the first nautical crossover ever designed, its concept aims to evoke the profound relationship of sea connoisseurs with the marine habitat, accomplishing construction savoir-faire to offer tranquil, long-range journeys in all weather conditions and classically sophisticated interiors with thoughtful storage space.

Prepare to savor your time at sea, navigating the world at your own personal pace.

60  
66  
25M  
30M





05

# ABOUT AZIMUT





# A FAMILY-MADE COMPANY CULTURE

An immense and personal passion for the sea. A clear and forward-facing attitude. A strong and relentless work ethic. Since 1969, Paolo Vitelli, the creative visionary founder and businessman behind Azimut, has been set on challenging the industry's status quo with a daring desire: bring to life an unexpected nautical experience, through yachts built to combine alluring aesthetics with construction expertise and impeccable technology.

An audacious mindset that has, over time, surprised and captivated the yachting sector, transforming Azimut into a bold and recognizable benchmark, and laying the foundation for the birth of the largest megayacht builder in the world, the Azimut | Benetti Group.

The international and management-based standing of the company today, is deeply nourished by the solid and memorable family heritage that has distinguished it from the beginning. A historically pioneering vision that enables it to continue thriving day after day, through ingenious inventions and long-term goals that look to the future with Paolo's daughter, Giovanna Vitelli.



# A SUSTAINABLE VISION TODAY, FOR TOMORROW

An avant-garde vision and a strong emotional appeal have shaped the history of Azimut as a leader in the field of nautical innovation as well as its commitment to the creation of a sustainable-oriented and attentive company culture today.

An ambitious and personal touch that has allowed Azimut to grow and evolve on both levels, embracing the challenge of a future nurtured by an eco-conscious approach to boat construction and by an authentic focus and responsibility on human well-being.







# OUR ECO-YACHTING PHILOSOPHY

The Azimut I Benetti Group has made tangible investments to guide the Technical as well as the R&D departments toward the construction of yachts with a diminished environmental impact. Its main areas of intervention have focused on significantly lowering fuel consumption and CO2 emissions through the development of highly efficient hull designs, innovative propulsion systems and an extensive use of carbon fiber to decrease yacht weight.





# A SAFE AND HEALTHY WORK ENVIRONMENT

The forerunning shipyard of Avigliana was the first of the company's Italian shipyards to obtain the ISO 45001 certification in 2011, attesting its rigorous abidance to all occupational health and safety requirements. Recognized as the most technologically-advanced shipyard in Europe, it has also led the nautical sector revolution in terms of being among the earliest adopters of the vacuum infusion process to drive resin into a laminate, avoiding styrene emissions and therefore guaranteeing its precious workers a healthier setting.

As of 2013, all the other Italian production sites have adapted to meet the necessary requirements to obtain the ISO 45001 certification.





MAGELLANO 66



AZIMUT YACHTS



# A GLOBALLY-CONNECTED DEALER AND SERVICE NETWORK

---

5 SHIPYARDS

---

6 DIRECT OFFICES

---

138 OFFICIAL DEALERS

---

80 COUNTRIES

---

The highly widespread commercial network put in place by Azimut Yachts, allows the company to offer a continuous presence to its ship owners, concretely curating their demands by meeting their most specific needs.

Find your Dealer →





# THE LARGEST PRIVATE GROUP IN THE YACHTING WORLD

Azimut is part of the Azimut | Benetti Group, the biggest private player and shipbuilder in the nautical sector today. The Vitelli family, the founder and majority shareholder of the company, has been leading the way for over fifty years now, continuing to innovate through the Group's main yacht brands, Azimut and Benetti, while developing a variety of service brands to cater to the different demands of ship owners worldwide.





# OUR SHIPYARDS MAKE US PROUD

Avigliana — Italy

HQ / SHIPYARD

Savona — Italy

DELIVERY CENTRE

Viareggio — Italy

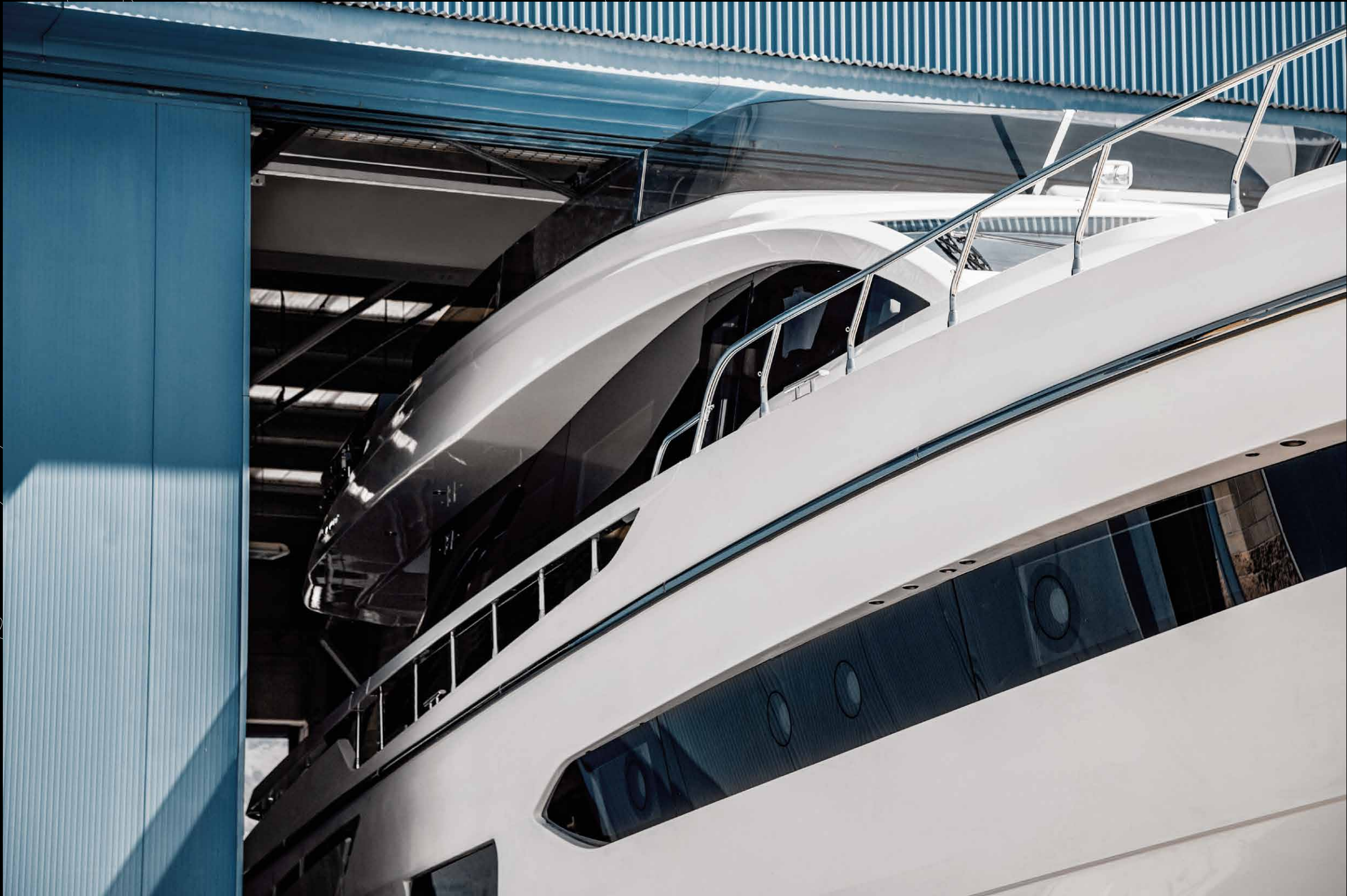
SHIPYARD / STYLING LOUNGE

Fano — Italy

SHIPYARD

Itajaí — Brazil

SHIPYARD





CONCEPT & DESIGN: APART  
PHOTOS: ALESSANDRO GUERRIERI, GIOVANNI MALGARINI,  
MICHELA LOCCI

AZIMUT YACHTS THANKS:  
APR LUXURY LINEN, DE COTIIS ARCHITECTS, LORO PIANA,  
DEDAR, PINETTI, PAOLA LENTI, SALVATORI, LA TAVOLA, KARTELL

OFFICIAL PARTNERS



AZIMUT | BENETTI SPA  
VIA MARTIN LUTHER KING, 9  
10051 AVIGLIANA, TORINO  
ITALY

RELEASE 01.24

This brochure in no way constitutes a contract of sale for the boatyard’s vessels to any person or company. All information contained herein, including but not limited to technical and performance data, illustrations, and drawings, is non-binding and for purposes of illustration only. The information in this brochure refers to the boatyard’s standard motoryacht models available as of the date of publication. Technical and descriptive information is valid only to the extent that it pertains to the specific vessel that is the subject of a purchase. Contract terms are valid only to the extent that they are contained in a contract of sale. This document is based on information available at the time of publication. Despite efforts to ensure the greatest possible accuracy, the information contained herein may fail to cover all details, omit technical or commercial changes that may have been made subsequent to publication, describe features that are not present, and fail to envisage all circumstances that might occur. Any illustrations, photographs, diagrams and examples shown in this brochure are included solely for the purposes of illustrating the text. Due to the different features of each vessel, the boatyard assumes no liability for actual use based on the illustrated applications.



^ZIMUT

[azimutyachts.com](https://azimutyachts.com)

